



# Washing Machine

## USER MANUAL

RW-A768VP

For Household Use Only  
Before operating the appliance, please read  
this manual and all the safety instructions  
thoroughly and keep it for future reference.

# CONTENTS

---

## SAFETY INSTRUCTIONS

- Safety instructions ..... 2

## INSTALLATION

- Product description ..... 7
- Accessories..... 7
- Installation area ..... 8
- Installation of drain hose ..... 9
- Levelling the washing machine ..... 9
- Selection of tap ..... 10
- Connection of inlet hose, tap and washing machine... 10

## OPERATIONS

- Preparation before washing..... 11
- Washing ..... 11
- After washing..... 11
- Washing matters needing attention ..... 12
- The usage of detergent and washing powder ..... 12
- Control panel ..... 13
- Options ..... 14
- Personalized setting of washing program..... 15
- Operations of washing process..... 15
- Washing programs table ..... 16

## MAINTENANCE

- Cleaning and care ..... 17
- Cleaning the cabinet..... 17
- Cleaning the inlet filter..... 17
- Cleaning drain pump filter ..... 18
- Trouble shooting..... 19
- Technical information ..... 20
- Warranty ..... 21

# SAFETY INSTRUCTIONS

---

## ■ Safety instructions

To avoid electric shock, fire or injury, please read the user manual carefully before using the appliance and keep it for future reference.

1. This appliance is not intended for use by persons (including children) with reduced physical, sensory or mental capabilities, or lack of experience and knowledge, unless they have been given supervision or instruction concerning use of the appliance by a person responsible for their safety.
2. Children should be supervised to ensure that they do not play with the appliance.
3. If the supply cord is damaged, it must be replaced by the manufacturer, its service agent or similarly qualified persons in order to avoid a hazard.
4. Please use the new hose-set supplied with the appliance. Old hose-set should not be reused.
5. The openings must not be obstructed by a carpet.
6. This appliance is for household use only.
7. This appliance is intended to be used in household and similar applications such as: staff kitchen area in shops, offices and other working environments; or clients in hotels, motels and other residential type environments.

# SAFETY INSTRUCTIONS

---

Explanation of the symbols:



## **WARNING!**

This combination of symbol and signal word indicates a potentially dangerous situation which may result in death or serious injuries.



## **CAUTION!**

This combination of symbol and signal word indicates a potentially dangerous situation which may result in slight or minor injuries or damage to property and the environment.



## **Note!**

This combination of symbol and signal word indicates a potentially dangerous situation which may result in slight or minor injuries.

# SAFETY INSTRUCTIONS

---



## **WARNING!**

### Electric shock!

- This appliance is for indoor use only.
- Do not put this appliance at humid place.
- Hands shall not be inserted into running tub.
- If the tub does not stop within 15 seconds after opening the cover, please stop using the appliance and have it repaired.
- Before any maintenance , unplug the appliance from the mains.
- Always unplug the machine and turn off the water supply after use.
- To ensure your safety, power plug must be inserted into an earthed three-pole socket. Check carefully and make sure that your socket is properly and reliably earthed.
- Make sure that the water and electrical devices must be connected by a qualified technician in accordance with the manufacturer's instructions and local safety regulations.

### Risk to children!

- The appliance can be used by children and persons with reduced physical, sensory or mental capabilities or lack of experience and knowledge if they have been given supervision or instruction concerning use of the appliance in a safe way and understand the hazards involved. Cleaning and maintenance shall not be made by children without supervision.
- Animals and children may climb into the appliance . Check the appliance before every operation.
- Children should be supervised that they do not play with the appliance.
- Machine may be very hot during the operation. Keep kids and pets far away from the machine during the operation.

# SAFETY INSTRUCTIONS

## Risk of explosion!

- Do not wash or dry articles that have been cleaned in, washed in, soaked in, or dabbed with combustible or explosive substances (such as wax, oil, paint, gasoline, degreasers, dry-cleaning solvents, kerosene, etc). This may cause fire or explosion.
- Please thoroughly rinse items by hand beforehand.



## **CAUTION!**

## Installing the product!

- This appliance is for indoor use only.
- This appliance is not intended for built-in installation.
- The openings must not be obstructed by a carpet.
- This appliance shall not be installed in bathroom or damp environment as well as in the rooms with explosive or caustic gases.
- Remove all packages and transport bolts before using the appliance. Otherwise, serious damage may result.
- The washing machine with single inlet valve only can be connected to the cold water supply.
- Plug must be accessible after installation.

## Risk of damaging the appliance!

- This appliance is only for home use and is only designed for the textiles suitable for machine washing.
- Do not climb up and sit on top cover of the appliance.
- Do not lean against the top lid.
- Cautions during handling the appliance.

# SAFETY INSTRUCTIONS

---

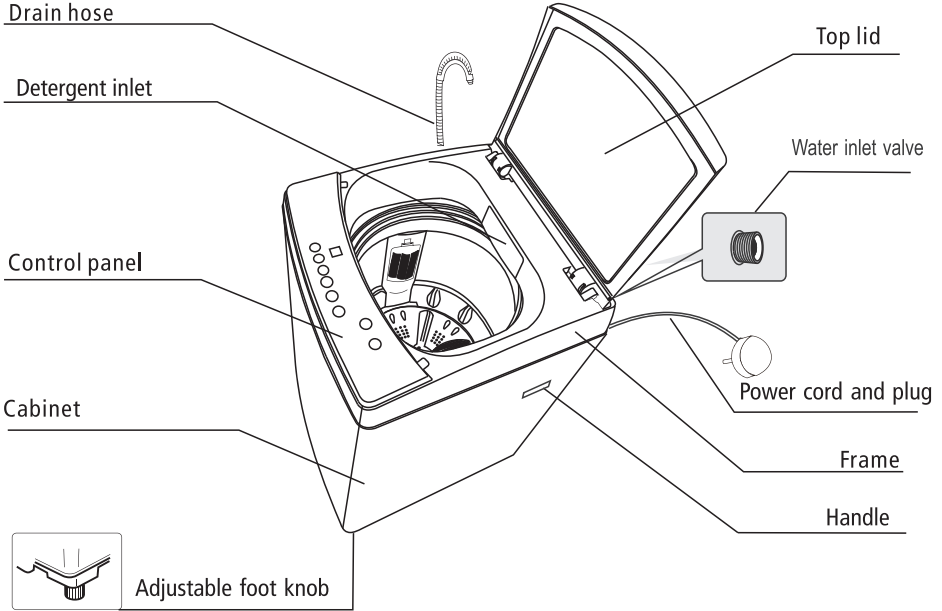
1. Transport bolts shall be reinstalled to the machine by a specialized person.
  2. The accumulated water shall be drained out of the machine.
  3. Handle the machine carefully. Never hold protruded parts on the machine while lifting. Machine top lid can not be used as the handle during the conveyance.
  4. This appliance is heavy. Transport with care.
- Please do not close the top lid with excessive forces footstep.
  - It is forbidden to wash carpets.

## Operating the appliance!

- Before first use of washing any clothes the first time, the appliance shall be operated in one round of the whole cycle without clothes inside.
- Flammable and explosive or toxic solvents are forbidden. Gasoline and alcohol etc. shall not be used as detergents. Please only select the detergents suitable for machine washing, especially for drum.
- Make sure that all pockets are emptied. Sharp and rigid items such as coin, brooch, nail, screw or stone etc. may cause serious damages to this machine.
- Please check whether the water inside the drum has been drained before opening its top lid. Please do not open the top lid if there is any water.
- Never manual refill the water during washing.
- After the program is completed, please wait for two minutes before opening the top lid.

# INSTALLATION

## ■ Product description



### 📌 Note!

- The product line chart is for reference only, please refer to the real product as standard.

## ■ Accessories



Inlet hose assembly Cabinet baseboard

Manual

Screw \* 2

Drain hose

Rat cover



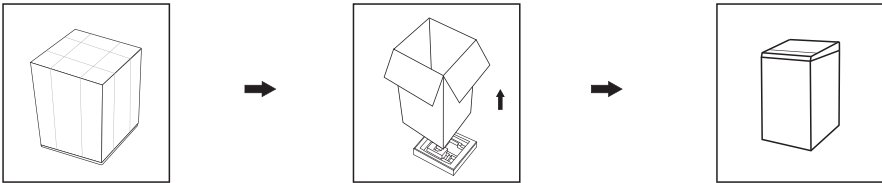
# INSTALLATION

---

## **WARNING!**

- Packaging material (e.g. Films, Styrofoam) can be dangerous for children.
- There is a risk of suffocation ! Keep all packaging well away from children.

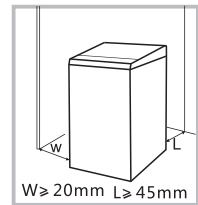
1. Remove the cardboard box and styrofoam packing.
2. Lift the appliance and remove the base packing.
3. Remove the inlet hose from the drum.



## ■ Installation area

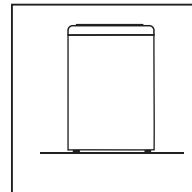
### **WARNING!**

- Stability is important to prevent the appliance from moving!
- Make sure the appliance does not stand on the power cord.



Before installing the appliance, the location characterized as follows shall be selected:

1. Rigid, dry, and level surface
2. Avoid direct sunlight
3. Sufficient ventilation
4. Room temperature is above 0 °C
5. Keep away from any heat sources such as coal or gas.



# INSTALLATION

## ■ Installation of drain hose

### ⚠ **WARNING!**

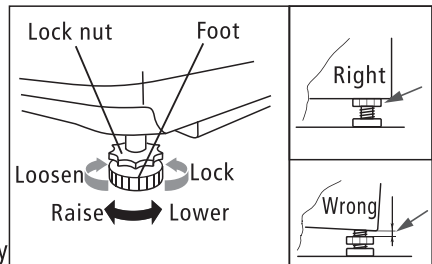
- Do not kink or protract the drain hose.
- Position the drain hose properly, otherwise water leakage might cause damage.
- If the drain hose is too long, do not force it into the appliance as it will cause abnormal noises.

## ■ Levelling the washing machine

### ⚠ **WARNING!**

- The lock nuts on all four feet must be screwed tightly against the housing.

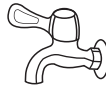
1. Check if the legs are closely attached to the cabinet. If not, please turn them to their original position, and tighten the nuts.
2. Check alignment of the appliance with a leveler, adjust it if needed.
3. Loosen the lock nut and turn the feet until it closely contacts with the floor.
4. After being locked properly, press the four corners again to make sure that they has been adjusted properly.



# INSTALLATION

## ■ Selection of tap

Please select appropriate tap.



Ordinary faucet



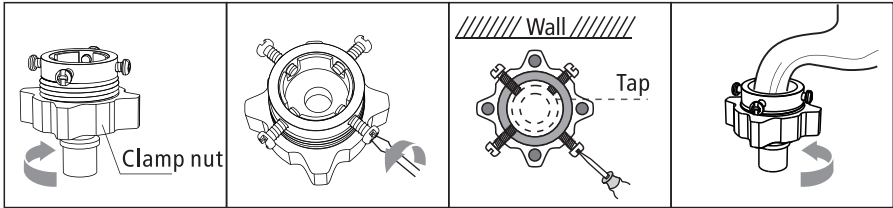
Screw tap



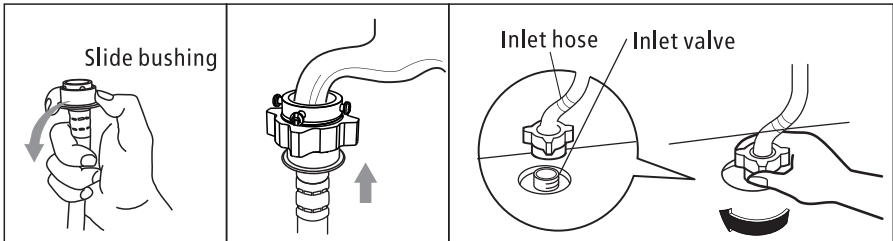
Special washing machine tap

## ■ Connection of inlet hose, tap and washing machine

1: Connection between ordinary tap and inlet hose

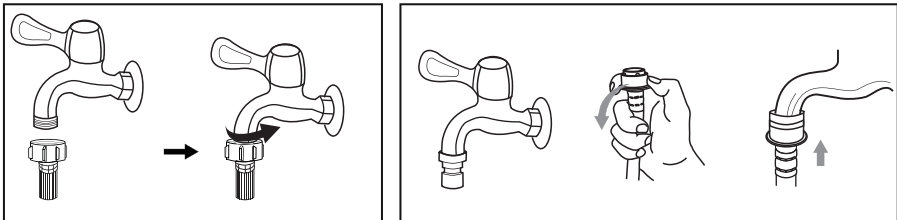


1. Loosen the clamp nut to show 5mm thread
2. Loosen the four bolts
3. Set the connecting base on tap and tighten bolts evenly
4. Tighten the clamp nut



5. Press the slide bushing, insert the inlet hose into the connecting base
6. Connection finished
7. After connection and installation, check if there is water leakage

2: Connection between screw tap and inlet hose



### ⚠ WARNING!

- To prevent water leakage or damage, follow the instructions in this chapter!
- Do not kink, crush, modify or sever water inlet hose.

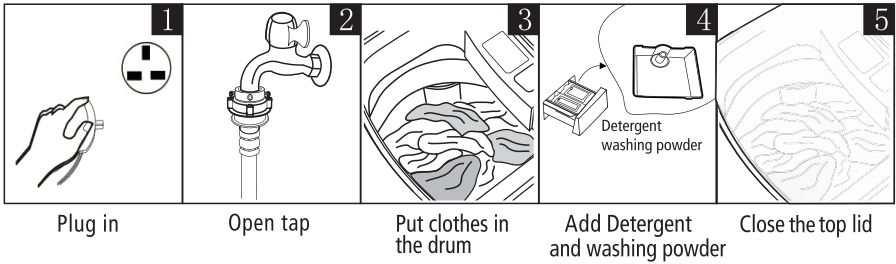
# OPERATIONS

## ■ Preparation before washing

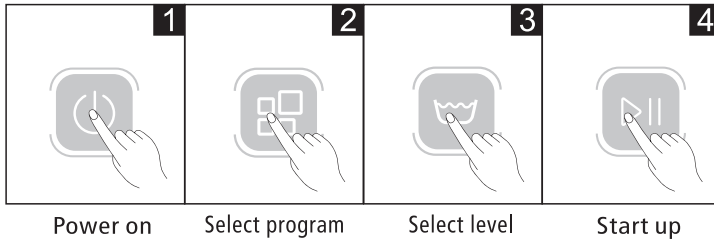
### ⚠ CAUTION!

- Before washing, please make sure the washer is installed properly.
- Before washing for the first time, the washing machine shall be operated in one round of the whole cycle without clothes.

A complete cycle is as shown below



## ■ Washing



### 📌 Note!

- If default is selected, step 2, 3 can be skipped.

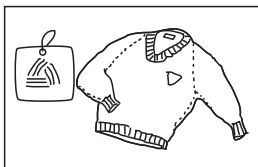
## ■ After washing

Buzzer will beep after washing finished and the power supply will be cut off automatically. Unload the laundry then.

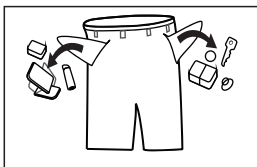
# OPERATIONS

## ■ Washing matters needing attention

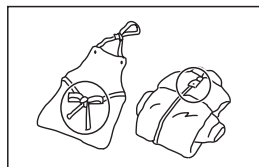
- The operation condition of the appliance should be (0-40)°C. If used under 0°C, the inlet valve and draining system may be damaged. If the appliance is placed under condition of 0°C or less, it should be transferred to normal ambient temperature to ensure the water supply hose and drain hose are not frozen before use.
- Please check the labels and the guide of the detergent before wash. Use non-foaming or less-foaming detergent suitable for machine washing.



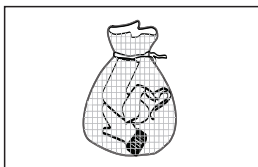
Check the label



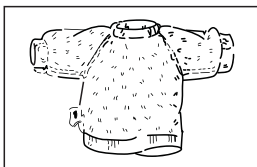
Take all items out of the pockets



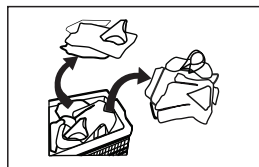
Knot the long strips, zip or button



Put small clothes into mesh laundry bags



Turn easy-pilling and long-pile fabric inside out



Separate clothes with different textures

### **⚠ WARNING!**

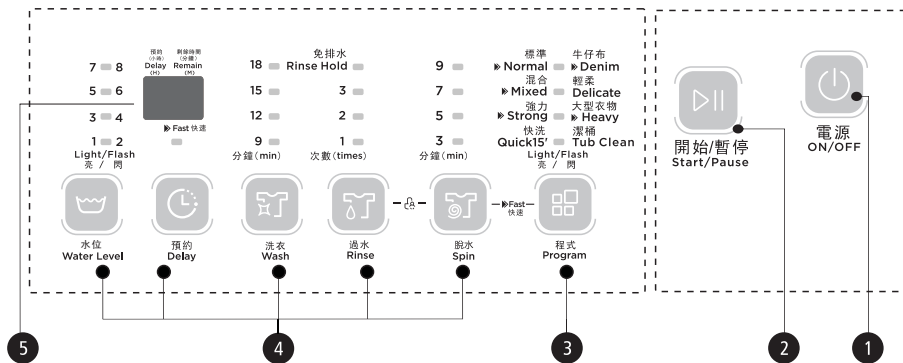
- When washing a single piece of clothing, it may easily cause unbalance. Therefore it is suggested to add one or two more clothes to be washed together so that draining can be done smoothly.
- Do not wash the clothes stained with kerosene, gasoline, alcohol and other flammable materials.

## ■ The usage of detergent and washing powder

- As for the detergent that can form into pasty masses, before they are poured into the detergent box, it is suggested to use some water for dilution to prevent the inlet of detergent box from being blocked and overflowing while filling water.
- Please choose suitable type of detergent for various washing temperature to get the best washing performance with less water and energy consumption.

# OPERATIONS

## Control panel



### Note!

- The chart is for reference only. Please refer to real product as standard.

#### 1 On/Off

To switch on or off.

#### 2 Start/Pause

To start or pause the washing cycle.

#### 3 Program

Available according to the laundry type.

#### 4 Option

To select an additional function, and will light up when selected.

#### 5 Display

The display shows the settings, estimated time remaining, options, and status messages for your washer. The display will remain on through the cycle.

When the LED flashes, it means the delay time to start the machine. When the LED light up, it means the remaining program time.

# OPERATIONS

## Options

Only for washers having these functions.



Rinse Level

### Rinse level

Select rinse level according to clothing categories, degree of soiling and washing habit.



Wash



Rinse



Spin

### Wash /Rinse /Spin

Washing time, rinsing times, spinning time and other settings can be selected.



Delay

### Delay

Set the delay function

1. Select a program

2. Press the Delay button to choose the time

3. Press [Start/Pause] to commence the delay operation



On



Choose the Program



Setting time



Start

Cancel the delay function

Press the [Delay] button until the Delay light is off . It should be pressed before starting the program. If the program already started, press the [On/Off] button to reset the program.

## ⚠ CAUTION!

- If a power outage occurs while the washing machine is operating, the program at that time is saved, and when the power is restored, the machine will restart from the interrupted program.
- The display time is the end time of the Delay.



### Fast

▶Fast



ON/OFF



▶Fast



The Fast indicator



Start



### Child Lock

To avoid mis operation by children.



Power on



Start



Press Child Lock

## ⚠ CAUTION!

- Press the two button at the same time to release the function.
- The " Child Lock" will lock all buttons except [On/Off].

# OPERATIONS

## ■ Personalized setting of washing program

Customers can select washing program according to actual demand, and set washing time, rinsing times, spinning time, water volume and a appointment time



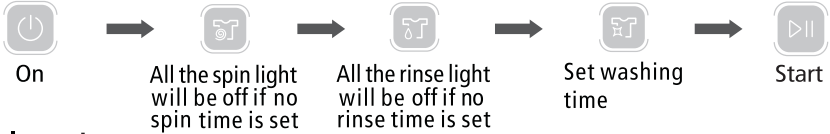
## ■ Operations of washing process

Customers can set single process or combinations of washing, rinsing and spinning according to demand. Detailed operations as follows for different models:

### One Touch Smart Wash



### Only wash



### Only spin



### Wash + Rinse + Spin



### 📌 Note!

- Note: Other process combinations are just like above.



# OPERATIONS

## ■ Washing program table

- ▶ Normal 標準
- ▶ Mixed 混合
- ▶ Strong 強力
- Quick15' 快洗
- Light/Flash 亮 / 閃
- ▶ Denim 牛仔布
- ▶ Delicate 輕柔
- ▶ Heavy 大型衣物
- Tub Clean 滾桶



程式  
Program

Programs are available according to the laundry type.

Only for washers having these functions.

Program		Time(min)	Fast(min)
Denim	Suitable to wash jeans stained/wear-resistant clothes.	54	45
Quick 15'	Suitable to wash light stained clothes and summer clothes.	15	-
Delicate	Soft, slow washing and spinning speed, to make the lightest wear and deformation.	47	-
Mixed	Suitable to wash cotton, linen, flax and jute clothes.	49	42
Normal	Standard fabric washing program, suitable to wash ramie cotton fabric. Wash for once, rinsing for twice, the spin time is longer.	52	43
Strong	The wash time is longer and the stream is stronger, so the washing effect is better.	54	45
Heavy	Suitable to wash heavy stained/wear-resistant clothes.	88	67
▶▶ Fast	Start up Fast Clean System : Power on, select "Normal", "Mixed", "Heavy", "Strong", "Denim" program, then press the Fast button. Press "Start /Pause" button, Fast function starts up. The relative figures will be showed after Fast function will be started. Cancellation of Fast function: When the Fast function was selected, the function can be cancelled by pressing the Fast button or power off.	-	-
Fuzzy weighting	The washing machine will select the water level automatically according to the load weight. 1. When there's water in the tub, this function is not available. 2. Before pressing the [Start/Pause] button, if the water level is selected, there will be no fuzzy weighting function. 3. After pressing the [Start/Pause] button, the washing machine will run the fuzzy weighting function. The water level can also be selected as needed.	-	-

# MAINTENANCE

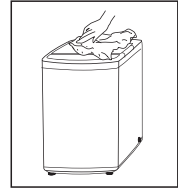
## ■ Cleaning and care

### ⚠ **WARNING!**

- Before any maintenance, please unplug the appliance and close the tap.

## ■ Cleaning the cabinet

Proper maintenance on the washing machine can extend its working life. The surface can be cleaned with diluted non-abrasive neutral detergents when necessary. If there is any water overflow, use a wet cloth to wipe it off immediately. No sharp items are allowed.



### 📌 **Note!**

- Formic acid and its diluted solvents or equivalent are forbidden, such as alcohol, solvents or chemical products, etc.

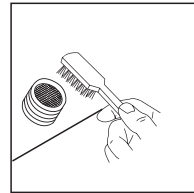
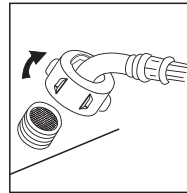
## ■ Cleaning the inlet filter

### 📌 **Note!**

- Inlet filter must be cleaned if water intake is slow.

Wash the filter in the washing machine:

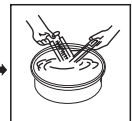
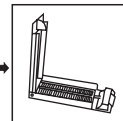
1. Screw off the inlet pipe from the backside of the appliance.
2. Pull out the filter with long nose pliers and reinstall it back after being washed.
3. Use the brush to clean the filter.
4. Reconnect the inlet pipe.



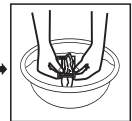
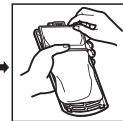
Clean the lint filter

1. There is a built-in lint filter in your washer. It can help to collect lint during washing cycle.
2. It is suggested to clean the lint filter every 10 cycles.
3. Take it out and clean the filter with water. Place it back into the washer afterwards.

### Magic filter



### Normal filter

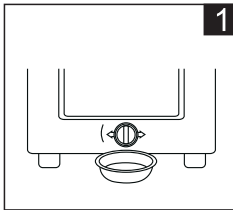


# MAINTENANCE

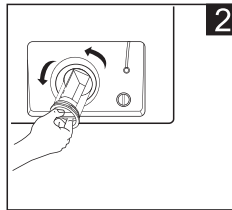
## ■ Cleaning drain pump filter

### **⚠ WARNING!**

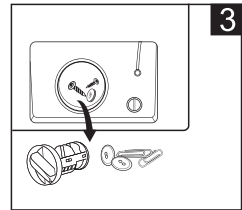
- Be careful of hot water!
- Allow detergent solution to cool down.
- Unplug the appliance to avoid electrical shock before cleaning.
- Drain pump filter can filter the yarns and small foreign matters from the washing.
- Clean the filter regularly to ensure the normal operation of the appliance.



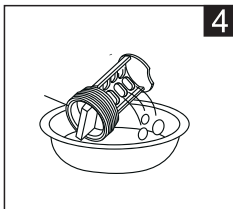
1  
Drain the water out of the pump, under which use a container to collect.



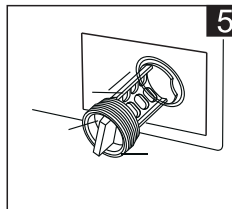
2  
Open the filter by turning counter clockwise.



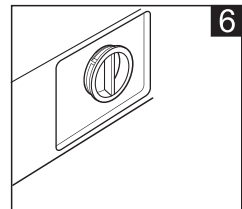
3  
Remove extraneous matter.



4  
Clean the filter.



5  
Restore it and adjust the convex area to align with the pump hole.



6  
Tighten the pump cover by turning clockwise.

### **⚠ CAUTION!**

- Make sure that valve cap and emergency drain hose are reinstalled properly. Cap plates should be inserted aligning to hole plates otherwise water may leak.
- Depending on the program selected, there may have hot water in the pump, never remove the pump cover during operation, always wait until the appliance has finished the cycle, and the water is emptied out. When replacing the cover, ensure it is securely re-tightened.

# MAINTENANCE

## ■ Trouble shooting

If the appliance does not work or it stops during operation.

First try to find a solution to the problem, If the solution cannot fix the problem, contact Shun Hing Electric Service Centre Ltd.

Description	Inspection Items
No washing	If the power is off or the fuse is burned out. If the power supply voltage is too low. If the water amount reaches the required water level.(The washer will not work if the water amount does not reach the required water level) If it is set to "Delay" washing mode. (It will only start to work until the reservation time reached)
No water flows in	If the power is off or the fuse is burned out. If the water supply is cut off or the water pressure is too low. If the inlet hose is properly connected and the water tap is opened. If the filtering screen of the inlet valve is blocked by dirt. If the coil of the inlet valve is damaged. ( It is normal phenomenon that the slight electromagnetic sound may be heard when the inlet valve is switched on) If the "Start / Pause" button is pressed after the power switch is pressed.
Abnormal draining	If the water drain hose is placed very high. If the end of the water drain hose is sealed. If the internal rubber ring of the drain valve is blocked by dirt.
Abnormal spin	If the top lid is closed. If all clothing piled largely at one side of the barrel or the clothing is excessively placed. If the washer is not placed in stable condition or it is placed in inclination state. (The ground is not flat). If the motor belt is loosened.

Alarm Code	Reason	Solution
E1	Alarm for abnormal water intaking.	Check the water tap is opened or not.
E2	Alarm for water drain has not finished.	Check the water level sensor and the drain pump.
E3	Alarm for lid not closed before wash and spin.	Close the lid.
E4	Alarm for laundry staying at one side.	Manually balance the clothes in the barrel by hands.
EXX	Others	Please try again first, call up service line if there are still troubles.

### Note!

- After checking , activate the appliance. If the problem occurs or the display shows other alarm codes again, contact Shun Hing Electric Service Centre Ltd.

# MAINTENANCE

---

## ■ Technical information

Standard Water Pressure 0.03MPa~0.8MPa

Model	Washing Capacity	Dimension (W*D*Hmm)	Net Weight	Rated Power	Power Supply
RW-A768VP	7.0kg	515x525x910	31kg	400W	220V~,50Hz

## ● Special Avowal

- 1. The information above has been checked; our company reserves the hermeneutic power to any print errors or misunderstanding on the content.**
- 2. Any technology improvement will add into new instruction without any prior notices. The product appearance and color refer to the practical air conditioner.**
- 3. The e-copy of user manual can be sent by e-mail on requested, please call Shun Hing Electric Works & Engineering Co. Ltd. hotline at 2861 2767.**

## ● After sale service

Guarantee period state from the date of purchasing to one year. If the product is damaged under proper use, a free repair service is available. Please present the official invoice and the guarantee certificate with the sales point's chop / redemption center's chop for free maintenance. For enquiries, please contact Shun Hing Electric Service Centre Limited hotline at 2406 5666.

**Turn off the power and contact Shun Hing Electric Service Centre Ltd. as soon as any of the following events occur.**

- The circuit breaker frequently trips or the fuse blows regularly.
- If water or foreign objects have accidentally entered the air conditioner.
- If there is abnormal sound during operation.

**信興電工工程有限公司**

**SHUN HING ELECTRIC WORKS & ENGINEERING CO., LTD**

辦公室: 香港九龍尖沙咀東部麼地道 67 號半島中心 9 樓

OFFICE: 9/F, PENINSULA CENTRE, 67 MODY ROAD, TSIMSHATSUI EAST,  
KOWLOON, HONG KONG

電話 TEL: (852) 2861 2767

傳真 FAX: (852) 2865 6706

網址 WEBSITE: [www.rasonic.com](http://www.rasonic.com)

電郵 EMAIL: [shew@shunhinggroup.com](mailto:shew@shunhinggroup.com)

**保養及維修 MAINTENANCE AND REPAIR SERVICE**

**信興電器服務中心有限公司**

**SHUN HING ELECTRIC SERVICE CENTRE LTD.**

辦公室: 香港新界葵涌勝耀街2號信興中心11樓

OFFICE: 11TH FLOOR, SHUN HING CENTRE, 2 SHING YIU STREET, KWAI CHUNG, NEW  
TERRITORIES, HONG KONG

電話 TEL: (852) 2406 5666

傳真 FAX: (852) 2408 0316

網址 WEBSITE: [www.shesc.com](http://www.shesc.com)

**消耗品/附件銷售熱線 CONSUMABLES/ ACCESSORIES SALES HOTLINE**

電話 TEL: (852) 2406 5666

**客戶服務中心 CUSTOMER SERVICE CENTRES**

香港新界葵涌勝耀街2號信興中心1樓

1ST FLOOR, SHUN HING CENTRE, 2 SHING YIU STREET, KWAI CHUNG, NEW  
TERRITORIES, HONG KONG

電話 TEL: (852) 2406 5439

傳真 FAX: (852) 2408 1389

澳門慕拉士大馬路193-199號南嶺工業大廈5樓I座

AVENIDA DE VENCESLAU DE MORAIS, NO. 193-199, 5 ANDAR-I, EDF. INDUSTRIAL  
NAM LENG, MACAU

電話 TEL: (853) 2836 2928

傳真 FAX: (853) 2833 6405

有關最新之客戶服務中心資訊, 請參閱信興服務中心網址: [www.shesc.com](http://www.shesc.com)或致電維修服務熱線查詢。

For the latest information of customer service centres, please visit [www.shesc.com](http://www.shesc.com) or call us at our hotline.